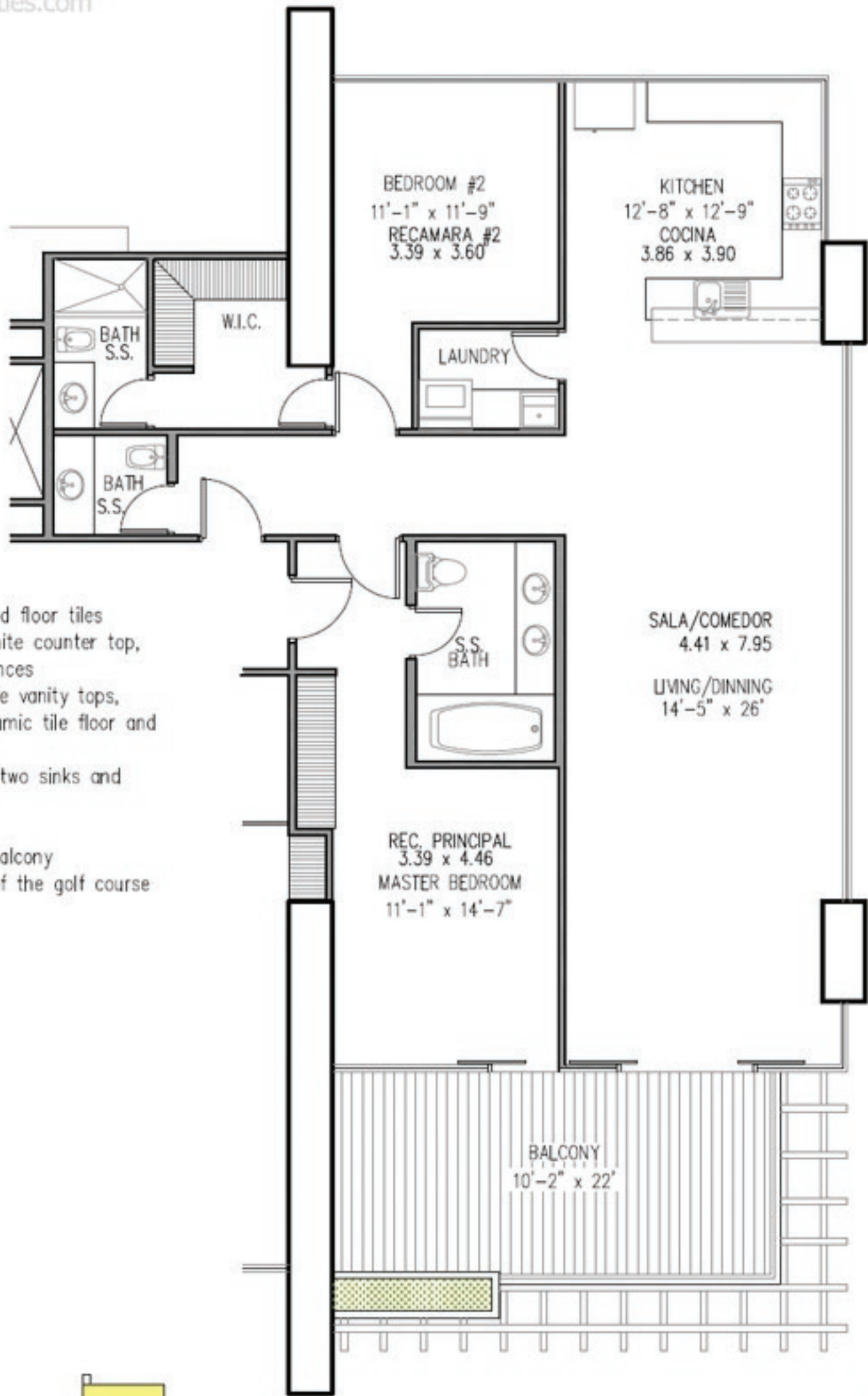


Condo "D"
 1776.05 sq.ft.
 2 Bedrooms
 2½ Bathrooms

- Floor with imported floor tiles
- Kitchen: with granite counter top, cabinets, appliances
- Bathrooms: granite vanity tops, imported ceramic tile floor and walls
- Master Bath with two sinks and bathtub
- Laundry room
- Over sizes open balcony
- Magnificent view of the golf course and the ocean



KEY PLAN

KEY SCHEME

